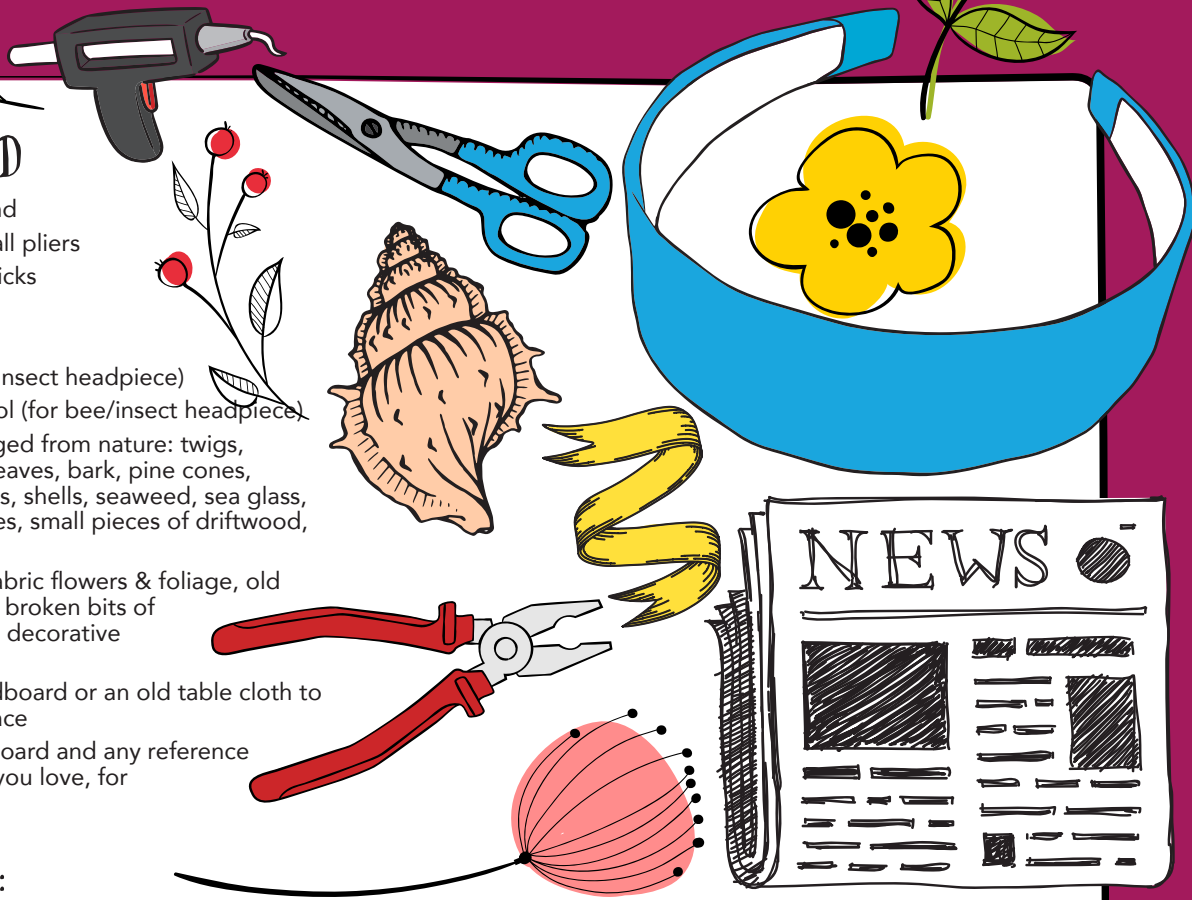


# CREATE YOUR OWN MYTHICAL HEADPIECE

## YOU WILL NEED

- A solid (plastic) hairband
- Soft wire & cutters/small pliers
- Hot glue gun & glue sticks
- Ribbon or string
- Scissors
- Pipe cleaners (for bee/insect headpiece)
- Pom-pom maker & wool (for bee/insect headpiece)
- Natural materials, foraged from nature: twigs, moss, lichen, flowers, leaves, bark, pine cones, acorns, nuts, seed cases, shells, seaweed, sea glass, sea pottery, small stones, small pieces of driftwood, feathers...
- Manmade materials: Fabric flowers & foliage, old Christmas decorations, broken bits of jewellery, fabric scraps, decorative trimmings...
- Newspaper/paper/cardboard or an old table cloth to protect your work surface
- Your character/mood board and any reference images of headpieces you love, for inspiration



## INSTRUCTIONS:

- Step 1:** Cover your work surface to protect it, gather your materials and lay everything out. Make sure there is a plug socket or extension lead next to your workspace.
- Step 2:** Take your hairband and cut a strip of felt or thick fabric just big enough to cover it's top surface (this will make it easier to attach to) You might want to take a look at some inspirational images for ideas. Now you can start designing your headpiece. You can try out different layouts before deciding on your favourite design.
- Step 3:** (for bee/insect headpiece): If you are making bee or insect antenna, then make two same size pom-poms with your pom-pom maker (if you don't have a pom-pom maker, you can find a tutorial here). Then twist two piper cleaners onto the hairband so they stick up in the air.
- Step 4:** Plug in your hot glue gun to heat up (have an adult close by and be careful, they get very hot!) Glue the strip of fabric onto the hairband first. Then take some wire and use it to wrap and secure any bigger pieces to your hairband as a base, for example branches and long flowers with stems. You might need an adult to help you cut the wire with pliers.
- Step 5:** Now you can glue on your other materials. Make sure you hold them in place for at least 6 seconds, so that the glue sets them in place. For the antenna, glue your pom-poms to the tops of the pipe cleaners.
- Step 6:** Keep adding decorative bits to your headpieces until you are happy with the design. You might want to try it on and check it in a mirror, to see how it looks on your head. Take two 40cm lengths of string or ribbon and glue them to the ends of your hairband, these can be tied at the back of your head to make the headpiece more secure.

- Step 7:** Check your headpiece, remove and stringy bits of glue and cover up any bare bits if needed. Now check the underneath of the hairband, it needs to be comfy to wear. If it's a bit rough or uncomfortable, you can glue on a strip of felt or soft fabric.

*Make sure to unplug the glue gun when you're done!*

*Your Mythical Headpiece is now complete, the perfect finishing touch to your fairytale costume!*



Share images of what you make on Instagram and Facebook using the hashtag:

**#OnceUponAParade**

and don't forget to tag Uillinn: West Cork Arts Centre (@uillinnwestcorkarts and @uillinnwestcorkartscentre).